



Universidade Federal de São Paulo  
Pró-Reitoria de Graduação

**PROGRAD**

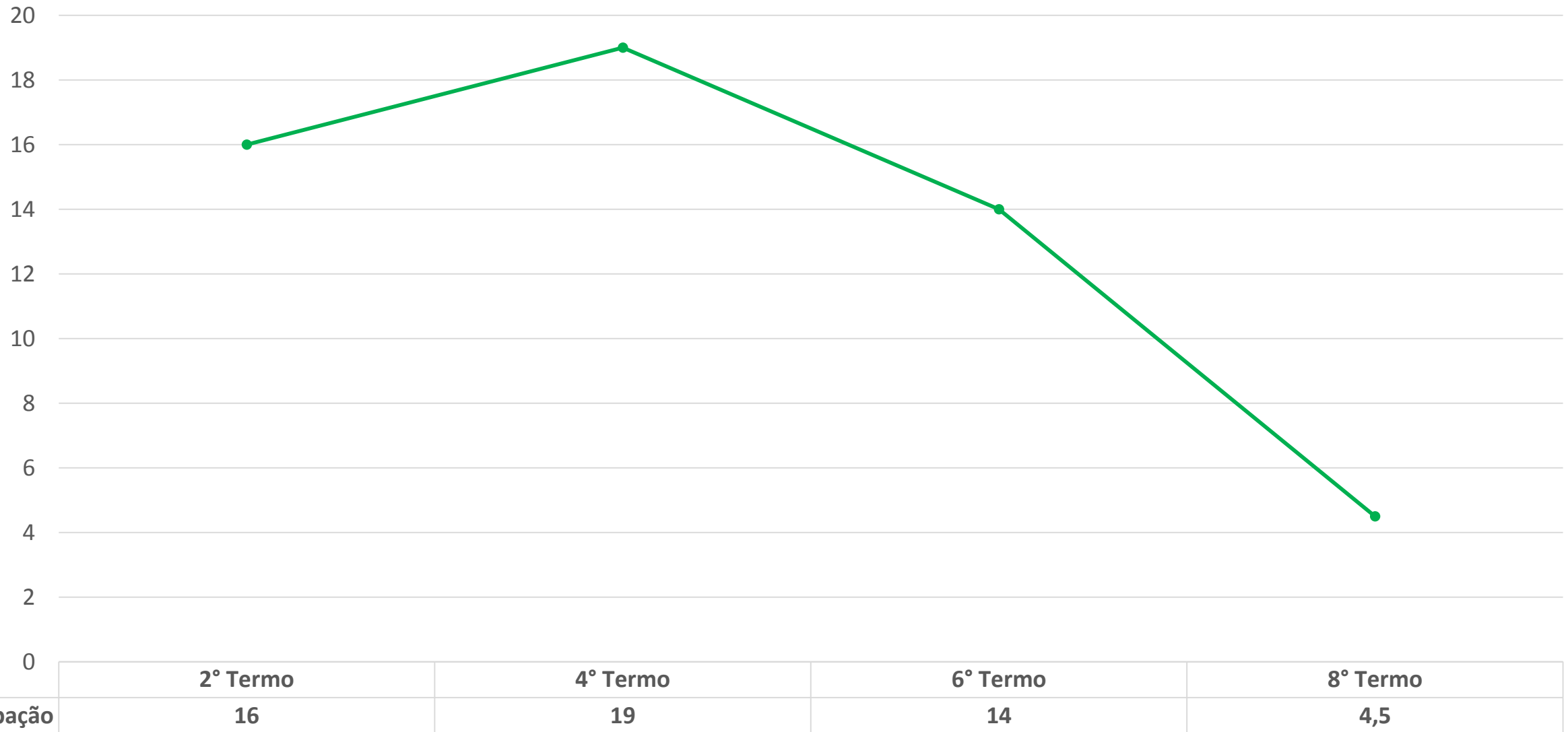


# Relatório Prova Progresso 2013

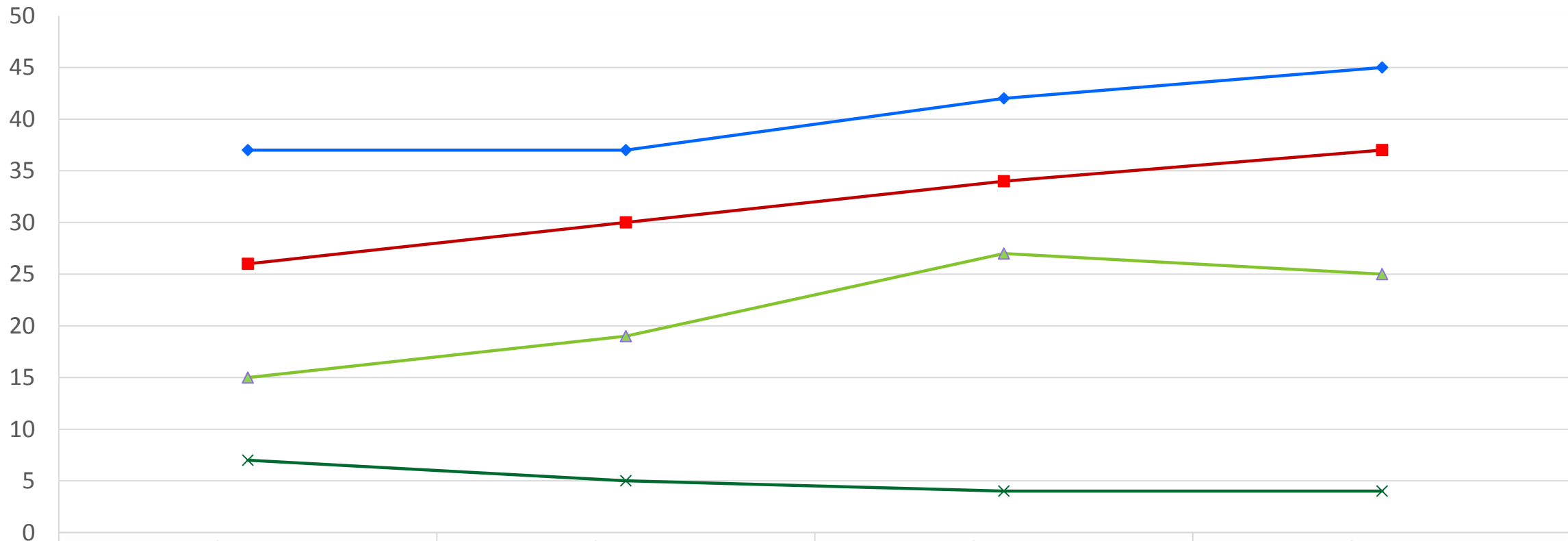
## Campus São Paulo Enfermagem



# Participação

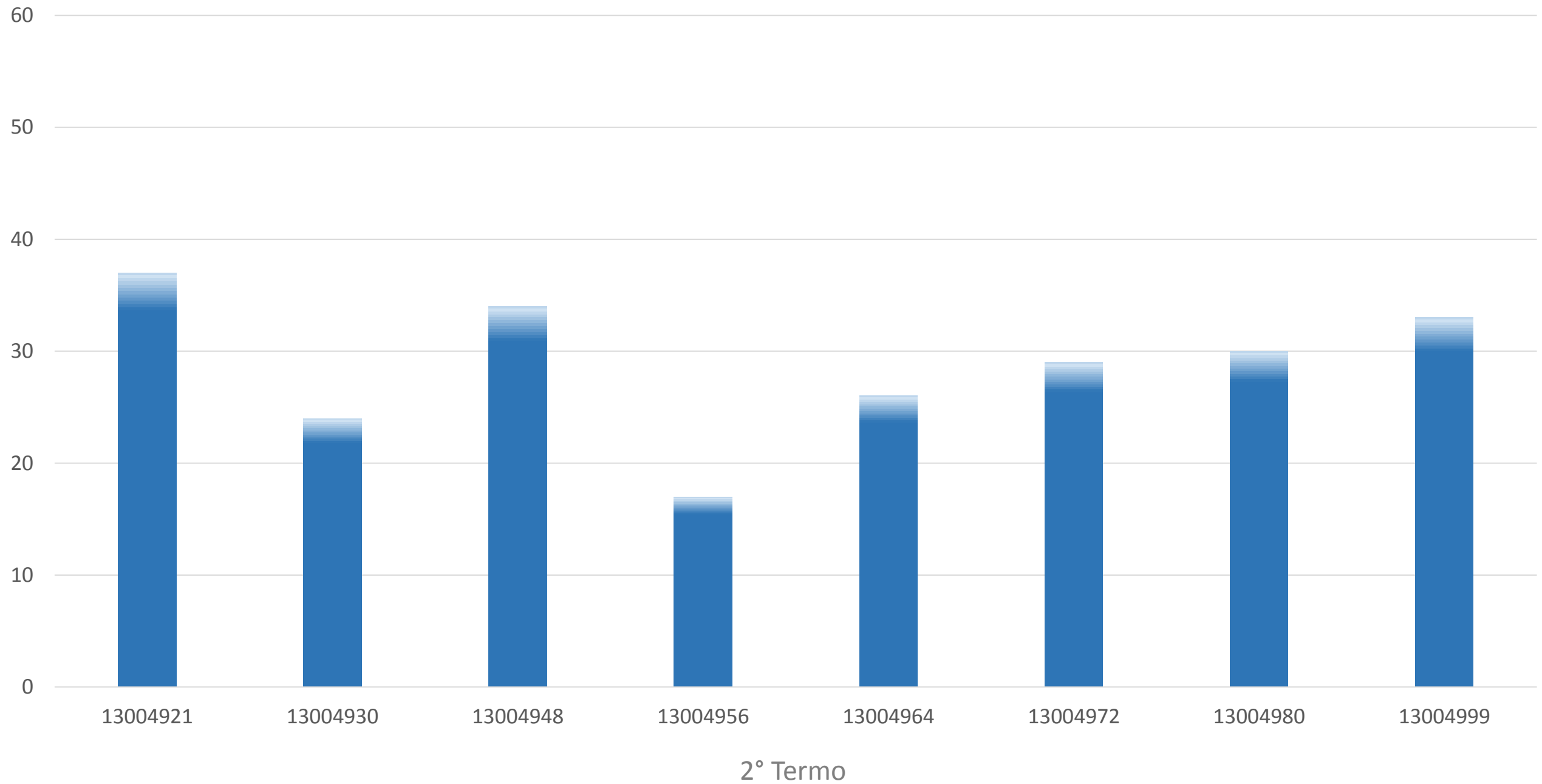


# Prova Progresso 2013 - Média

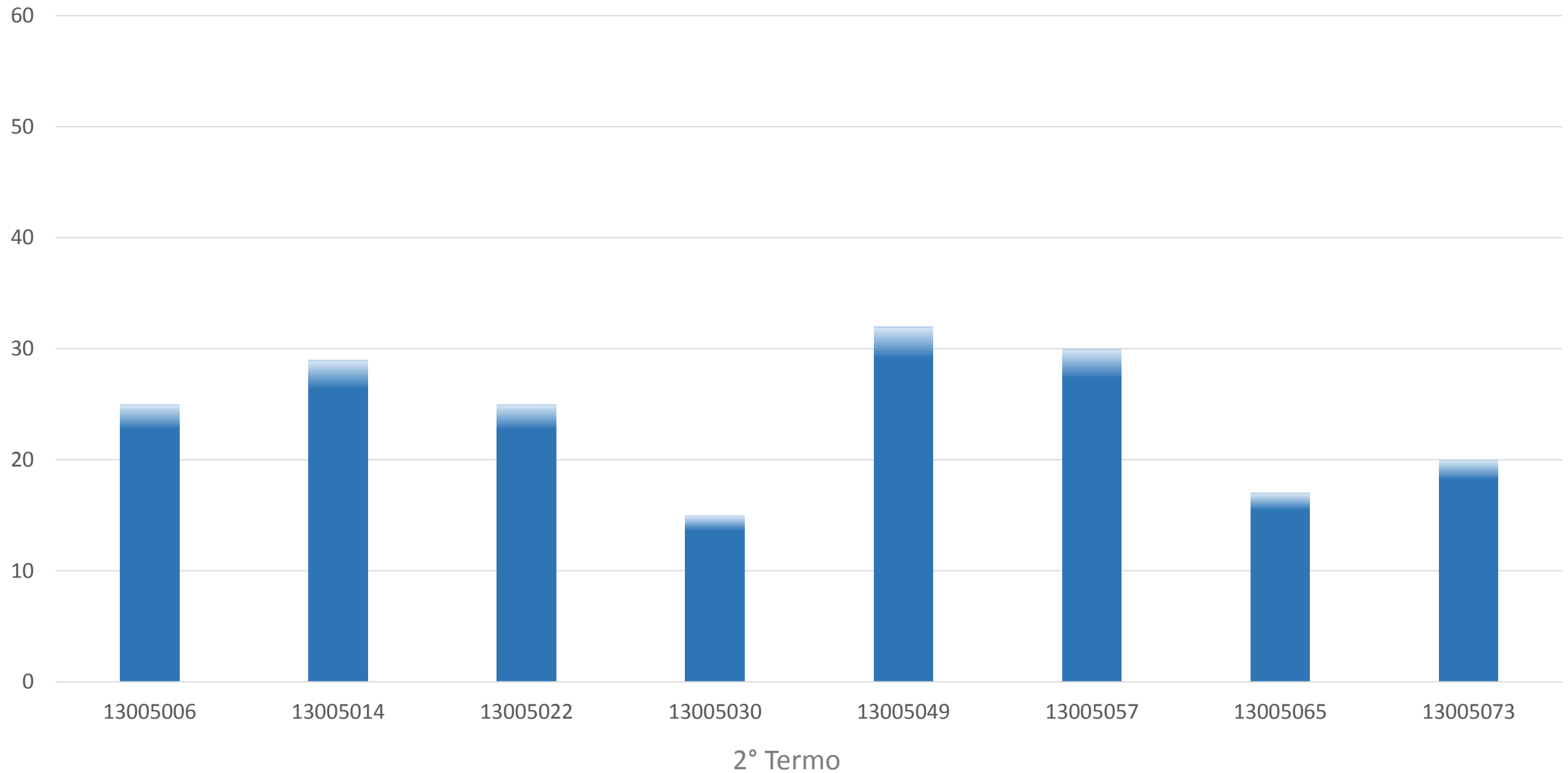


	2° Termo	4° Termo	6° Termo	8° Termo
◆ Máximo	37	37	42	45
■ Média	26	30	34	37
▲ Mínimo	15	19	27	25
× Desvio Padrão	7	5	4	4
* *				

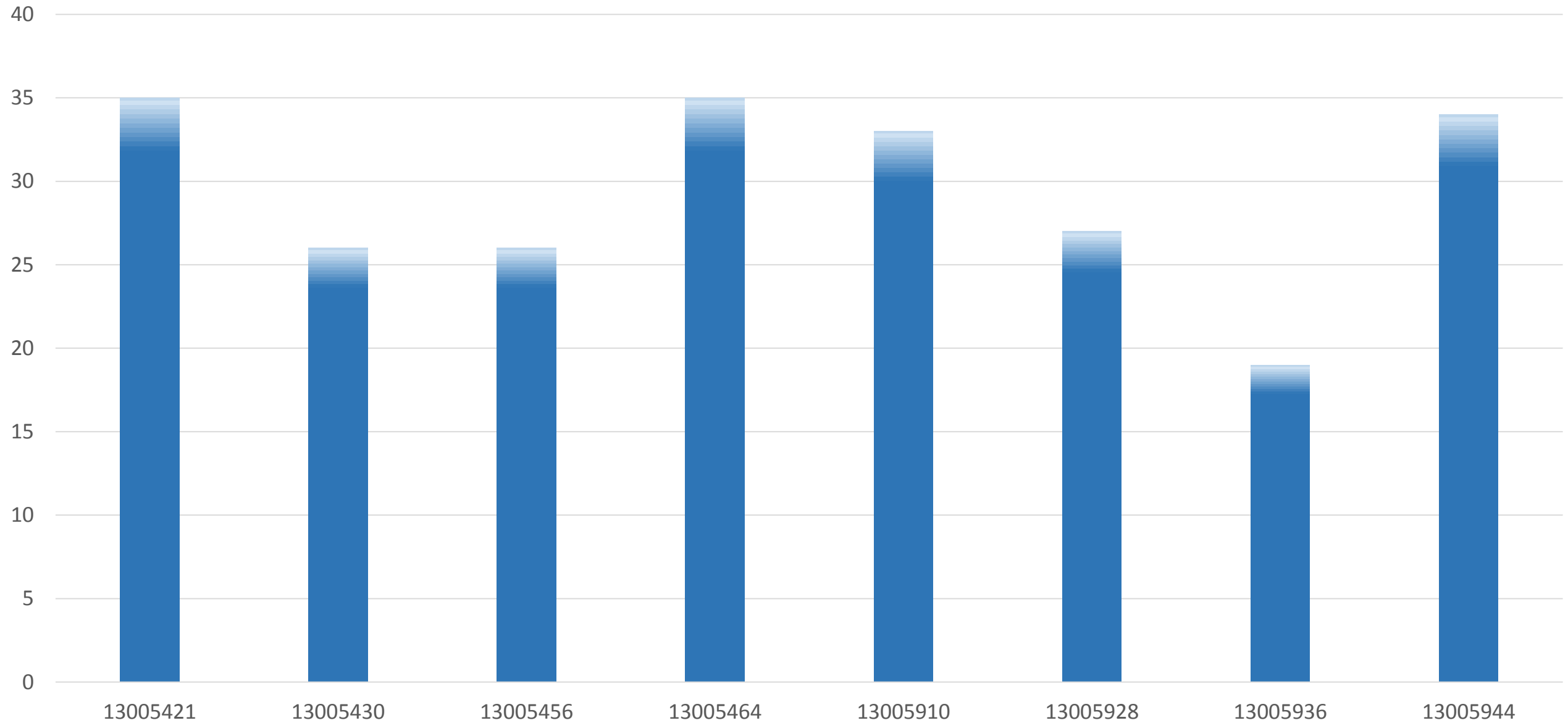
# Acerto Alunos



# Acertos por Aluno

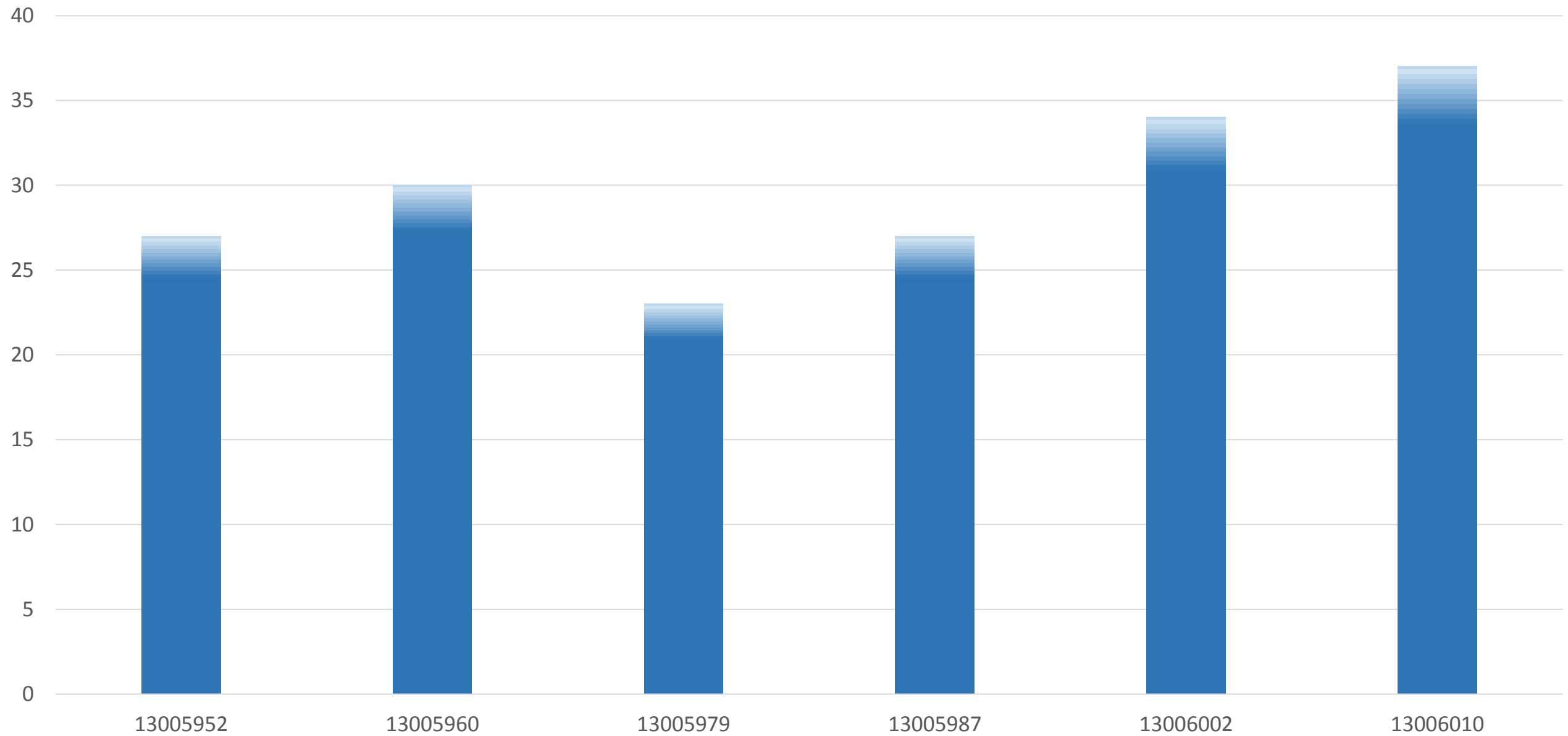


# Acertos Alunos



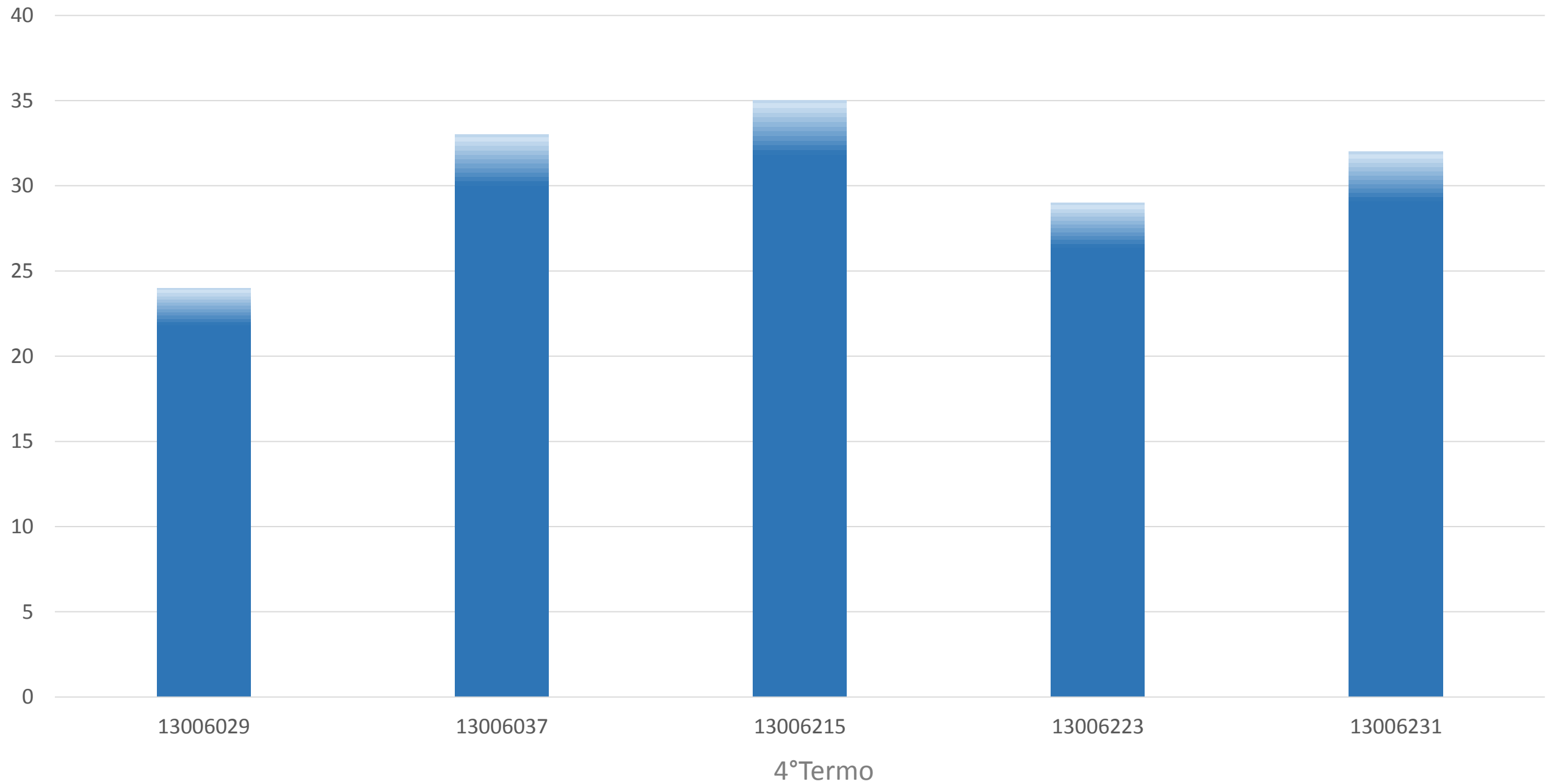
4° Termo

# Acertos por Aluno



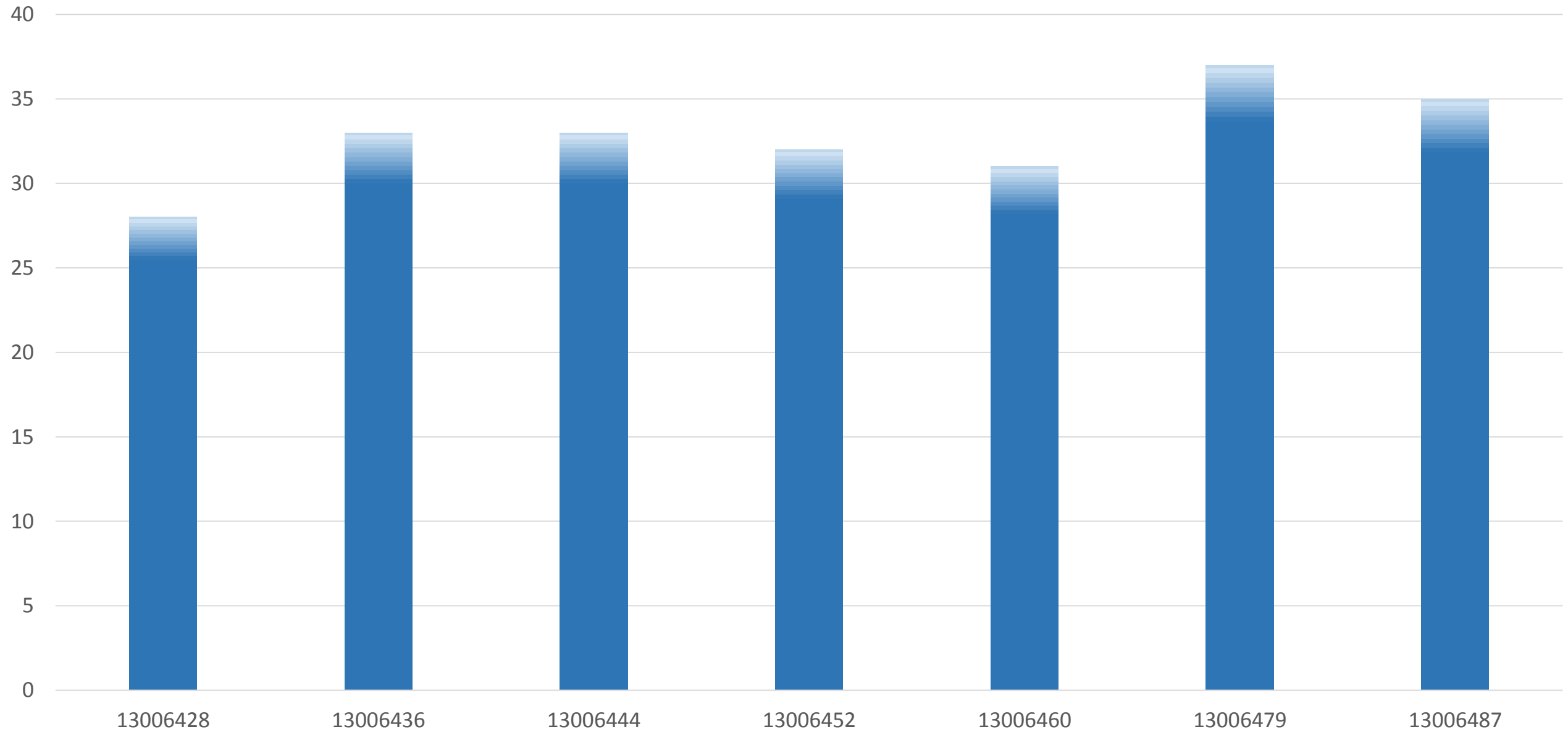
4º Termo

# Acertos por Aluno



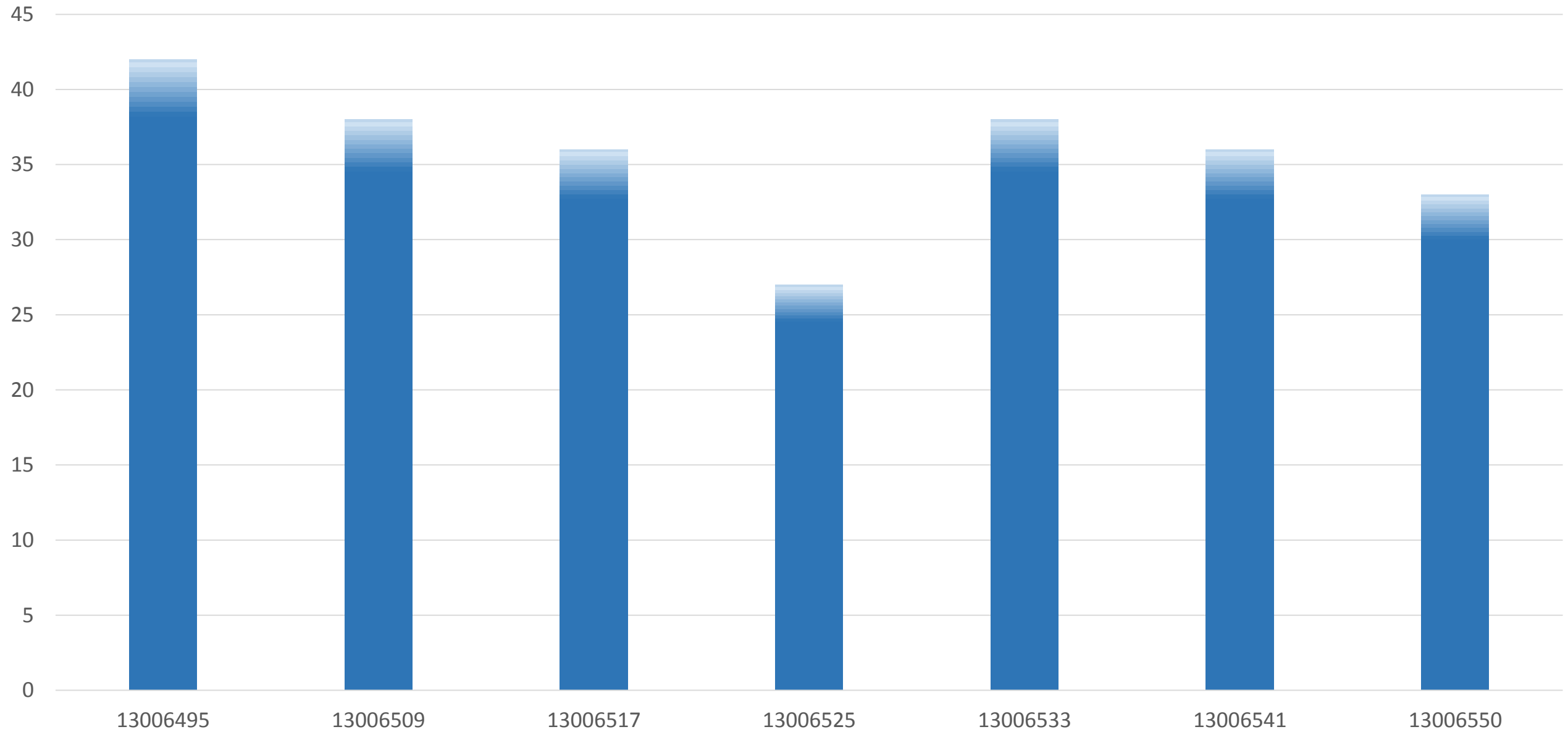


# Acertos por Alunos



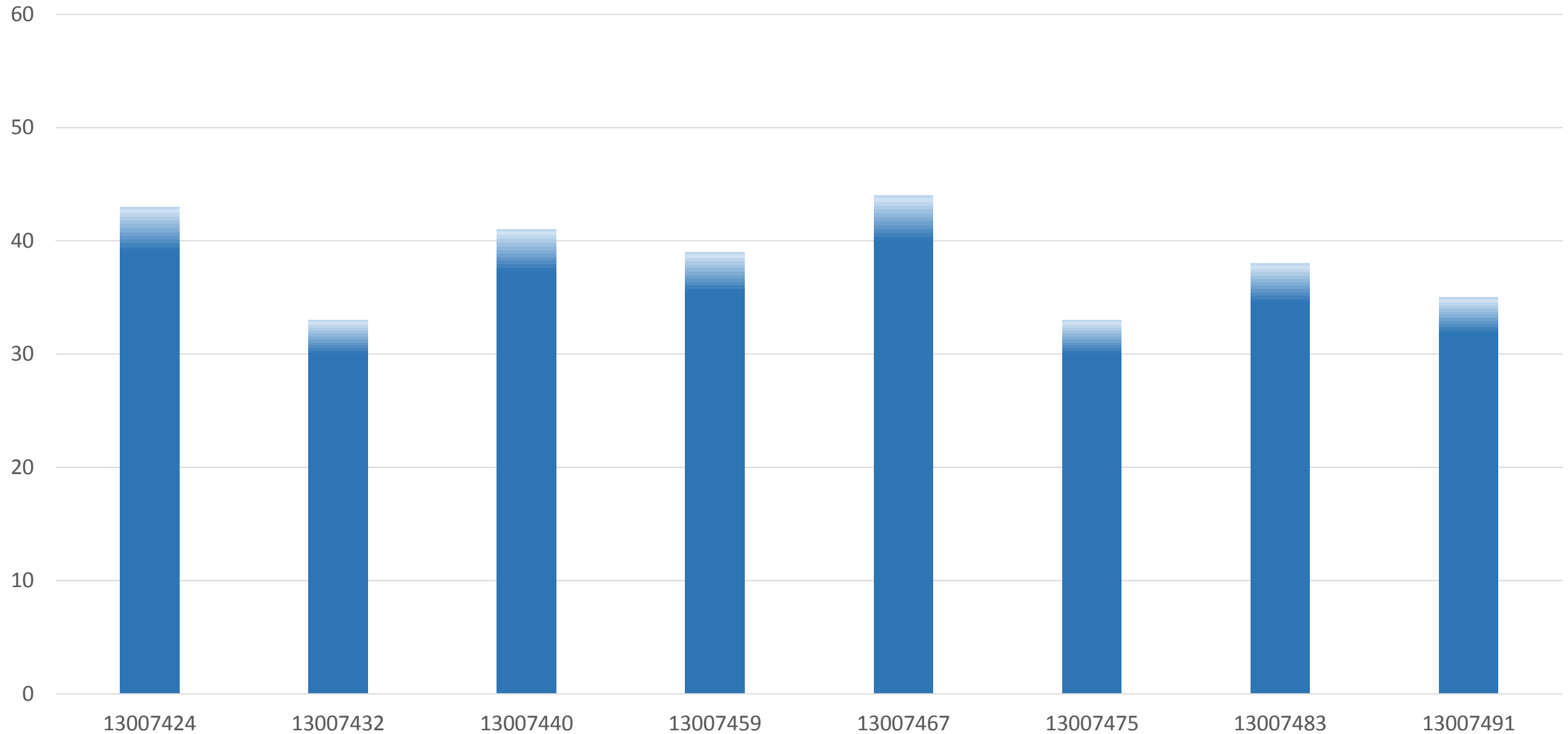
6° Termo

# Acertos por Aluno



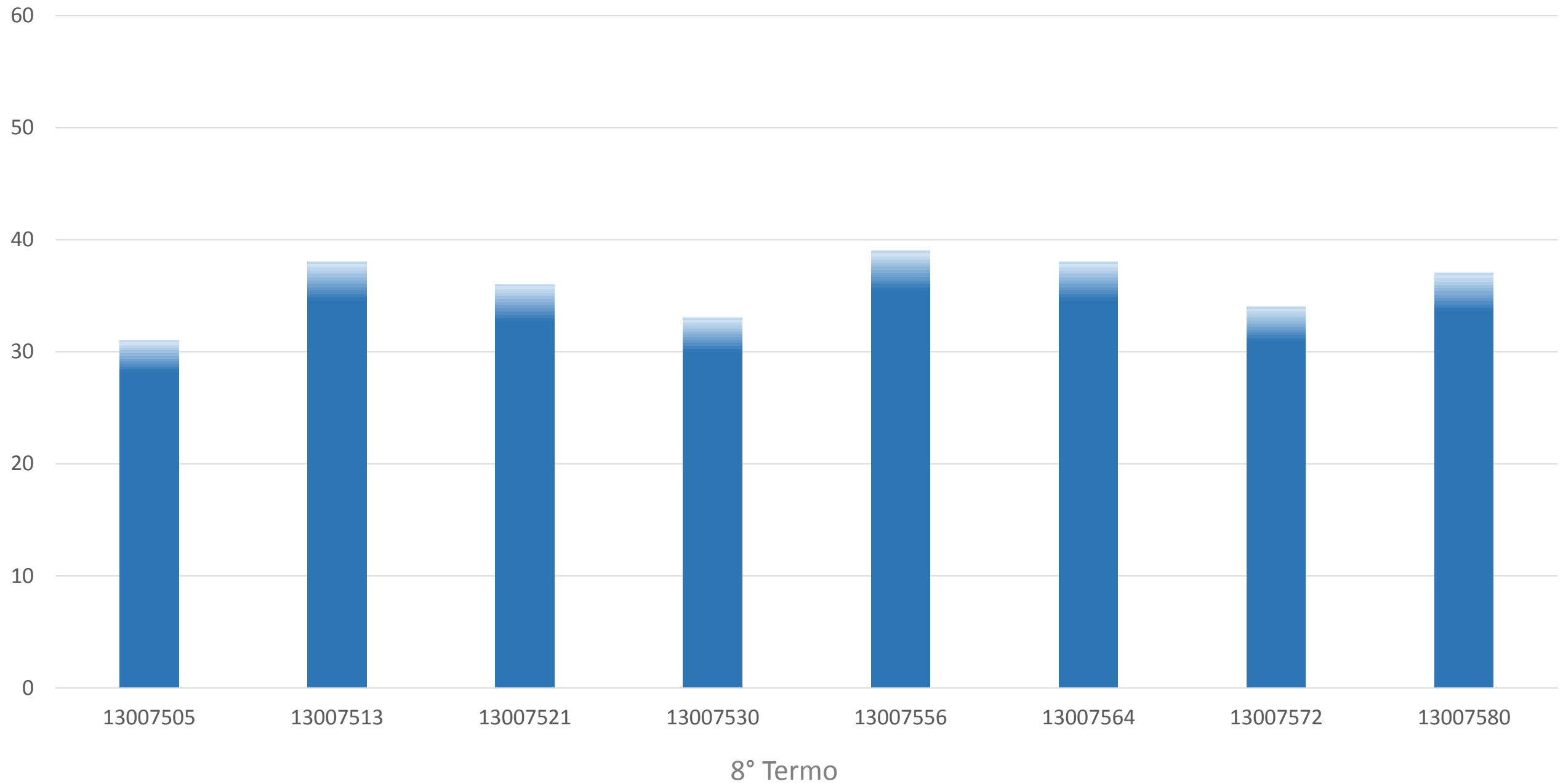
6° Termo

# Acertos por Alunos

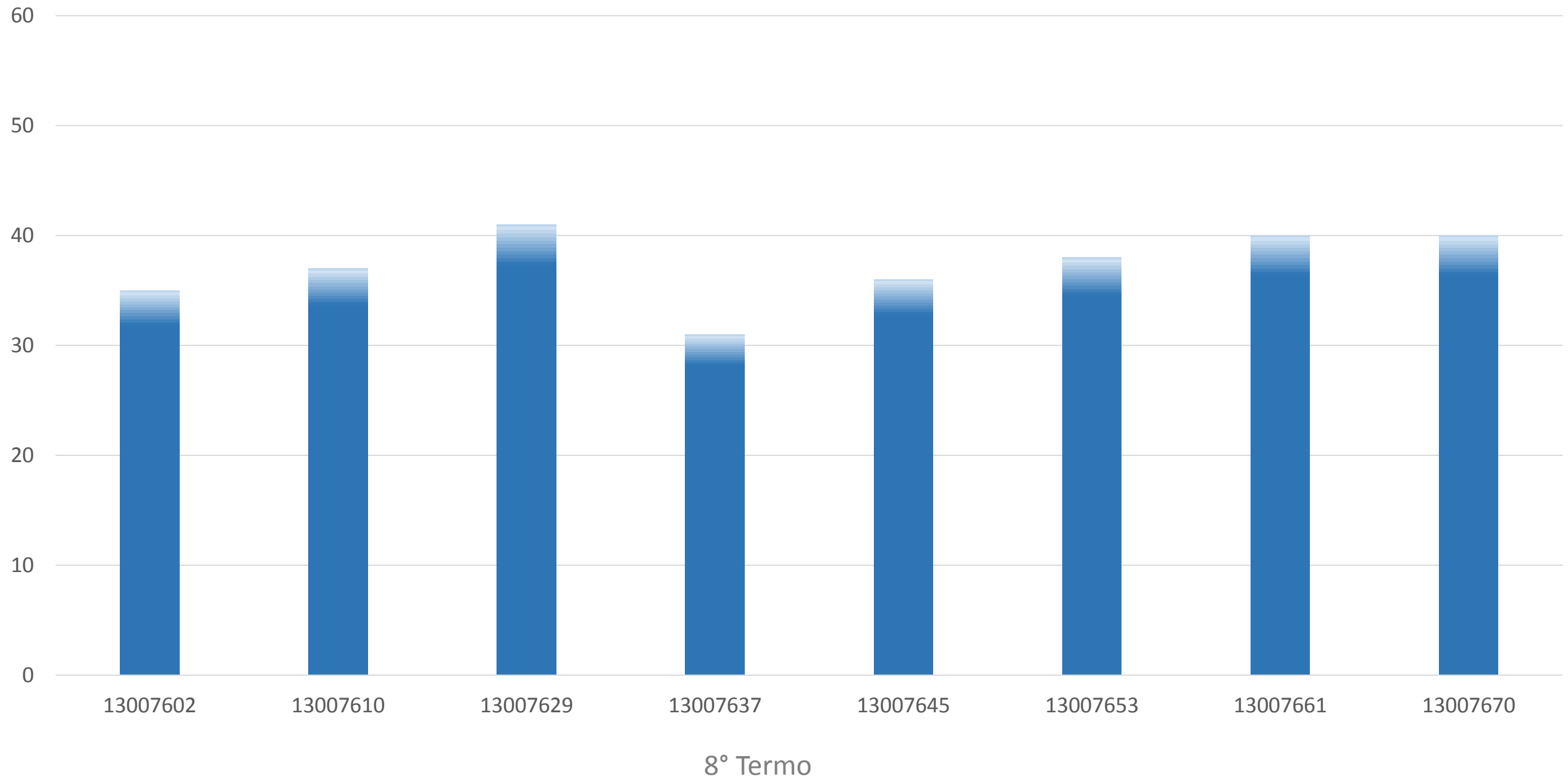


8º Termo

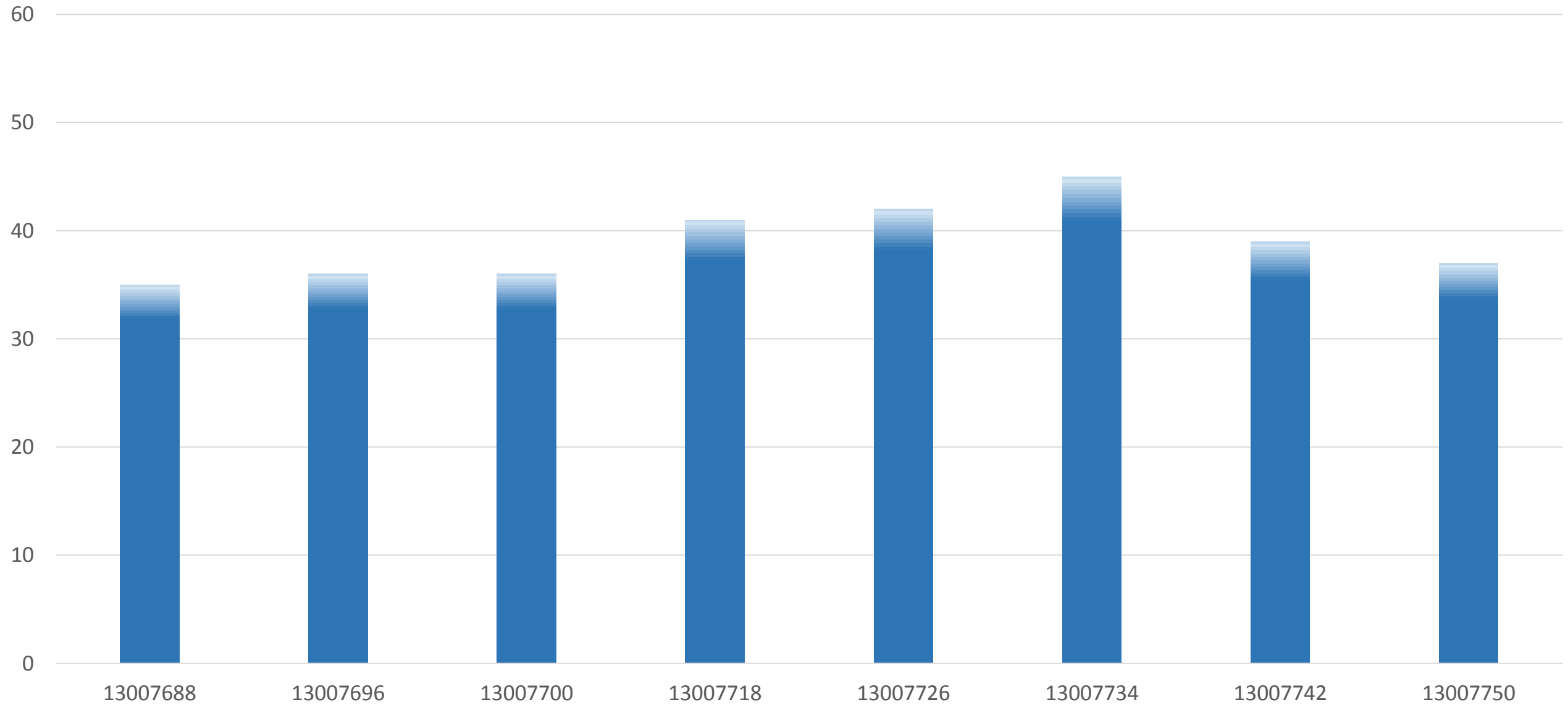
# Acertos por Aluno



# Acertos por Alunos

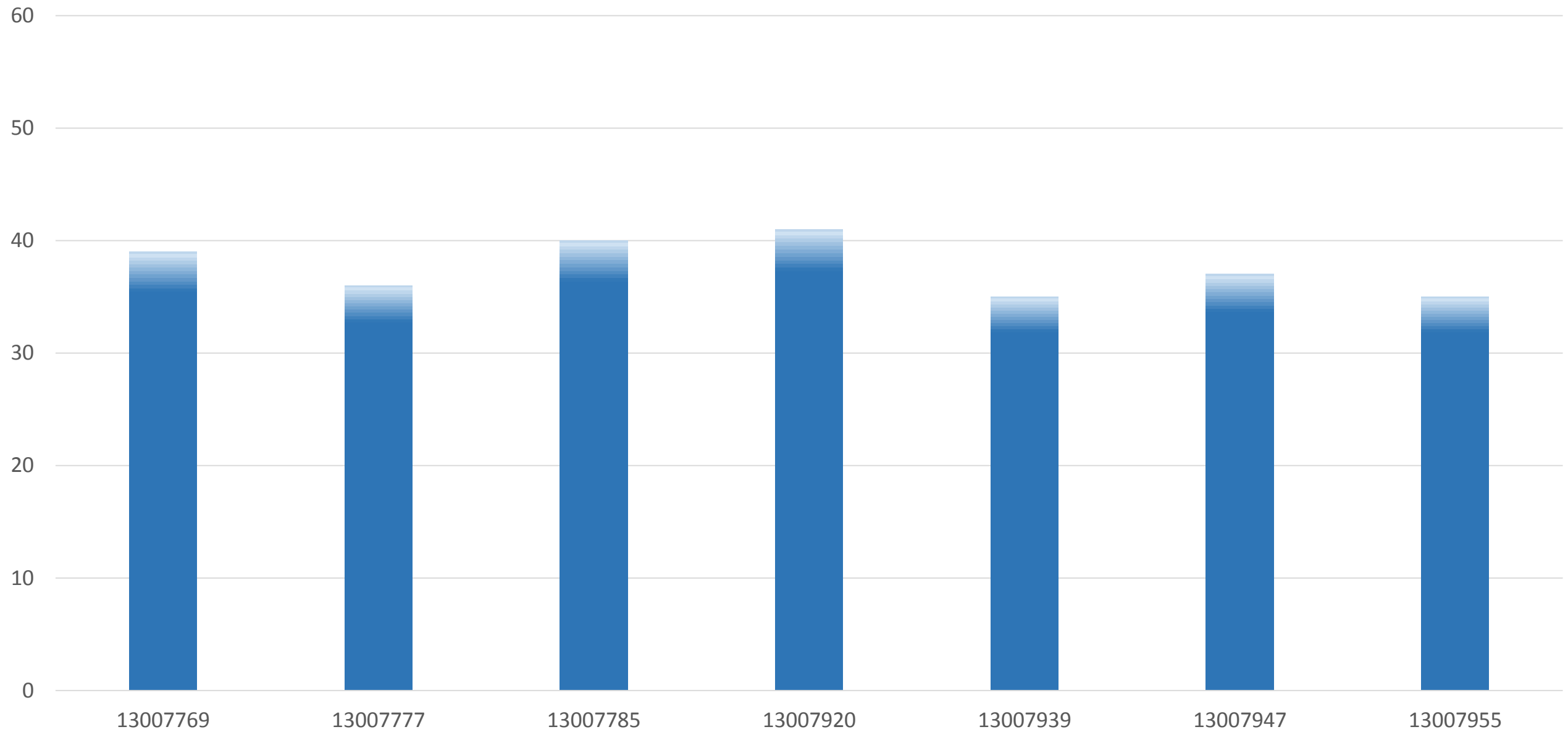


# Acertos por Aluno



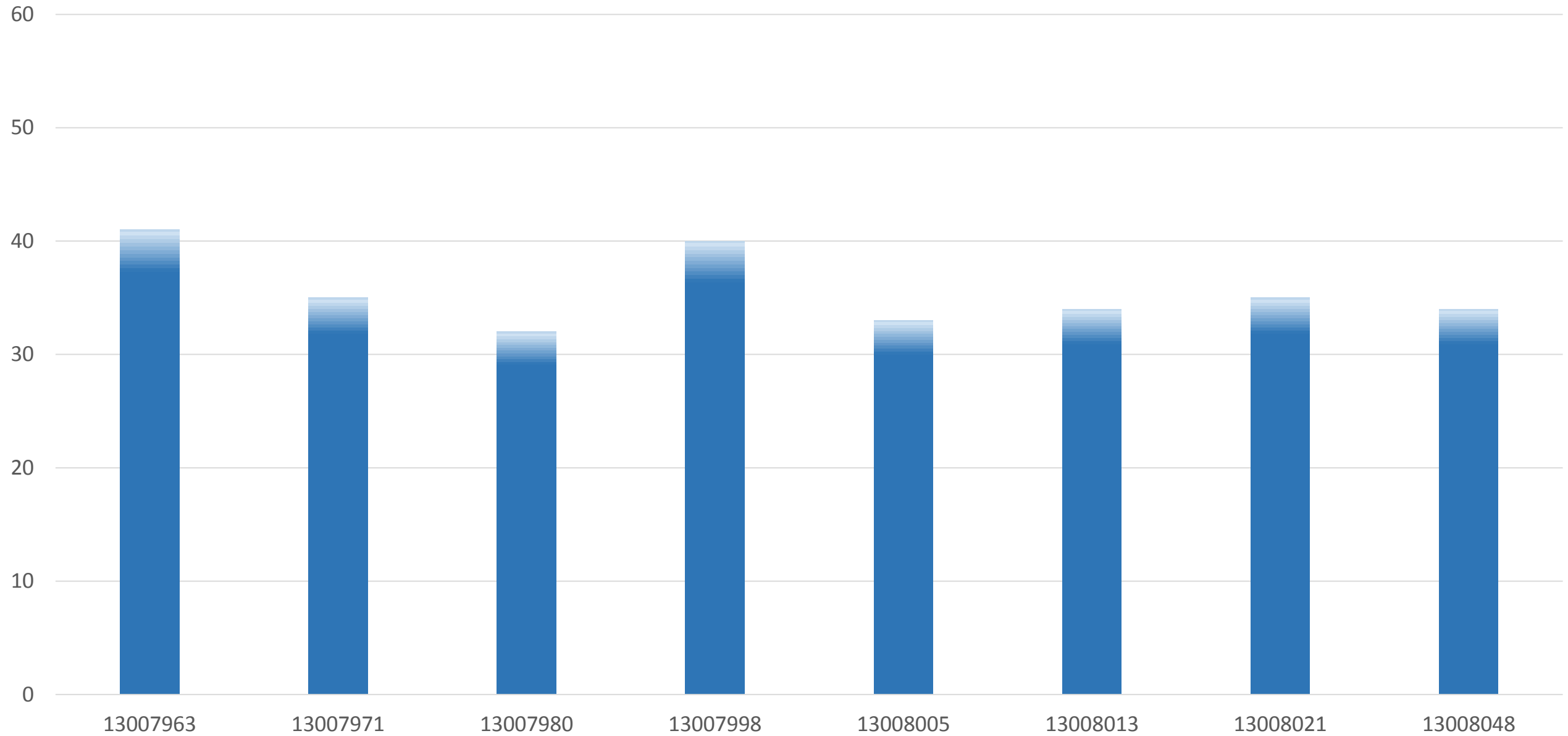
8º Termo

# Acertos por Aluno



8º Termo

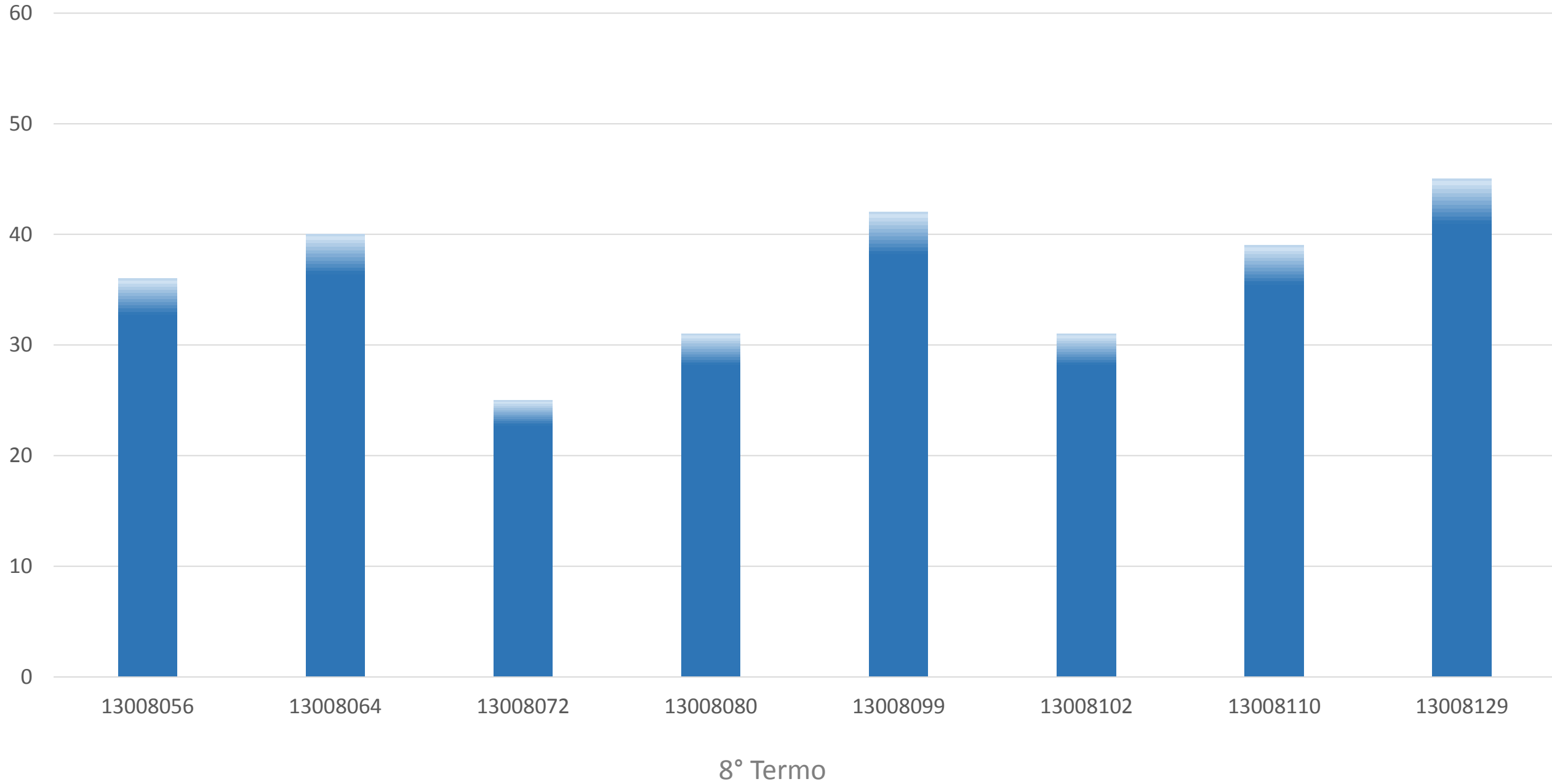
# Acertos por Alunos



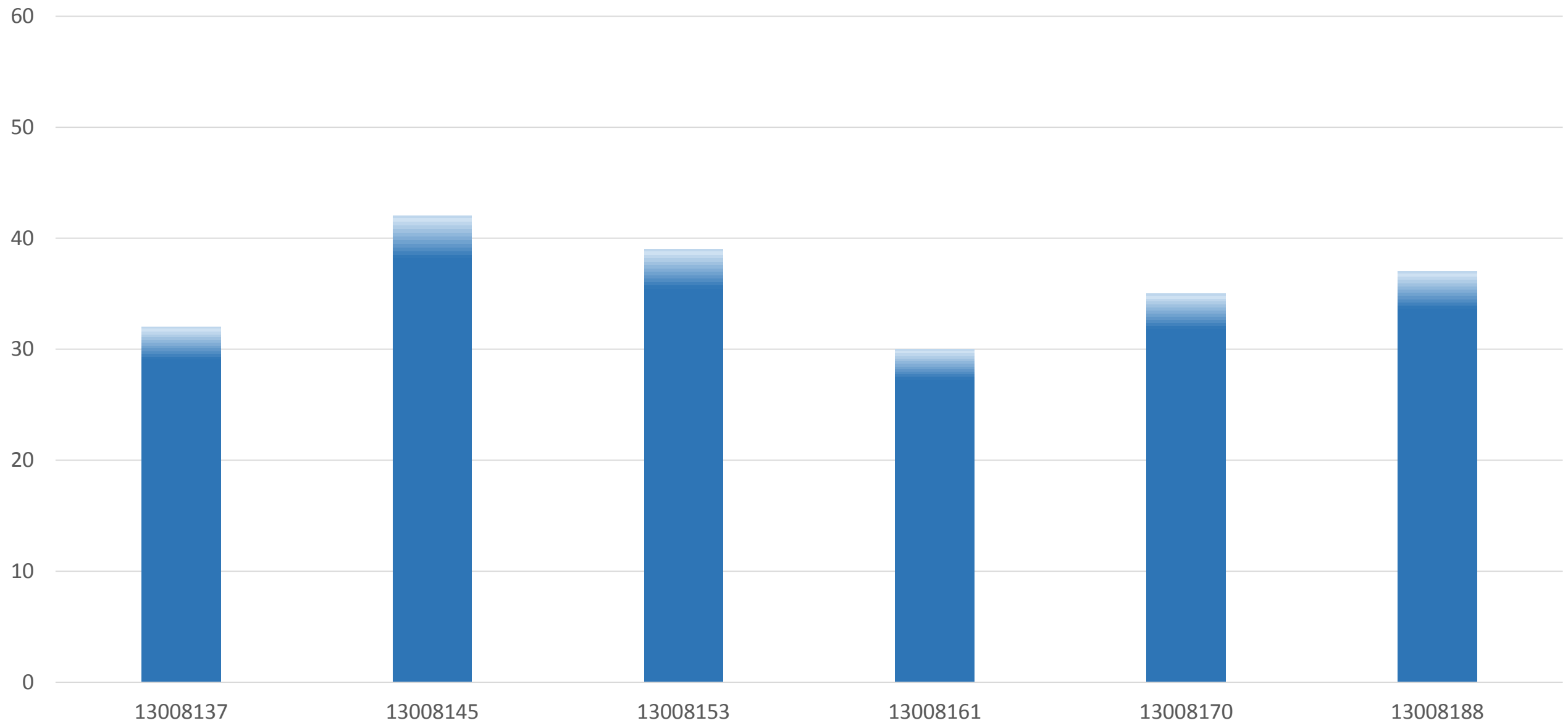
8º Termo



# Acertos por Aluno

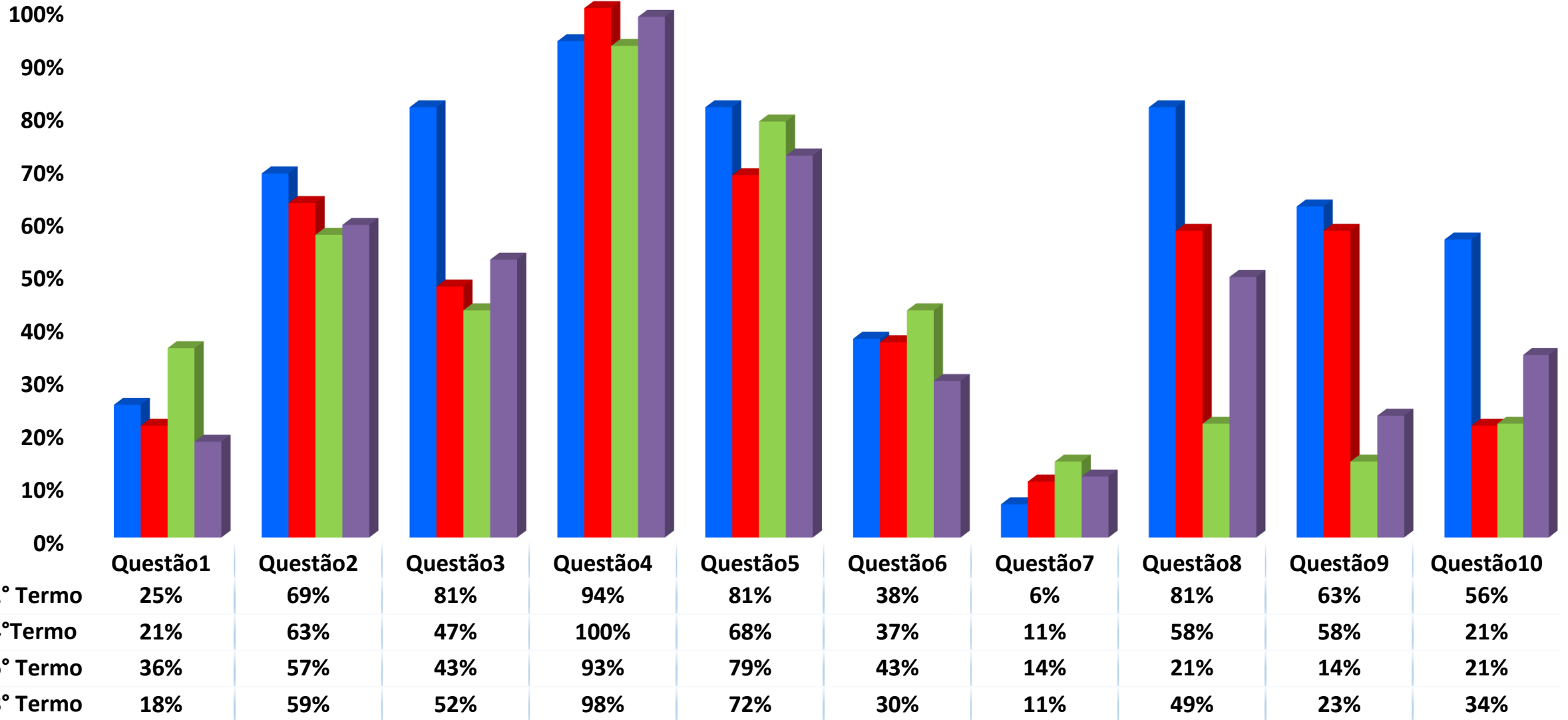


# Acertos por Aluno



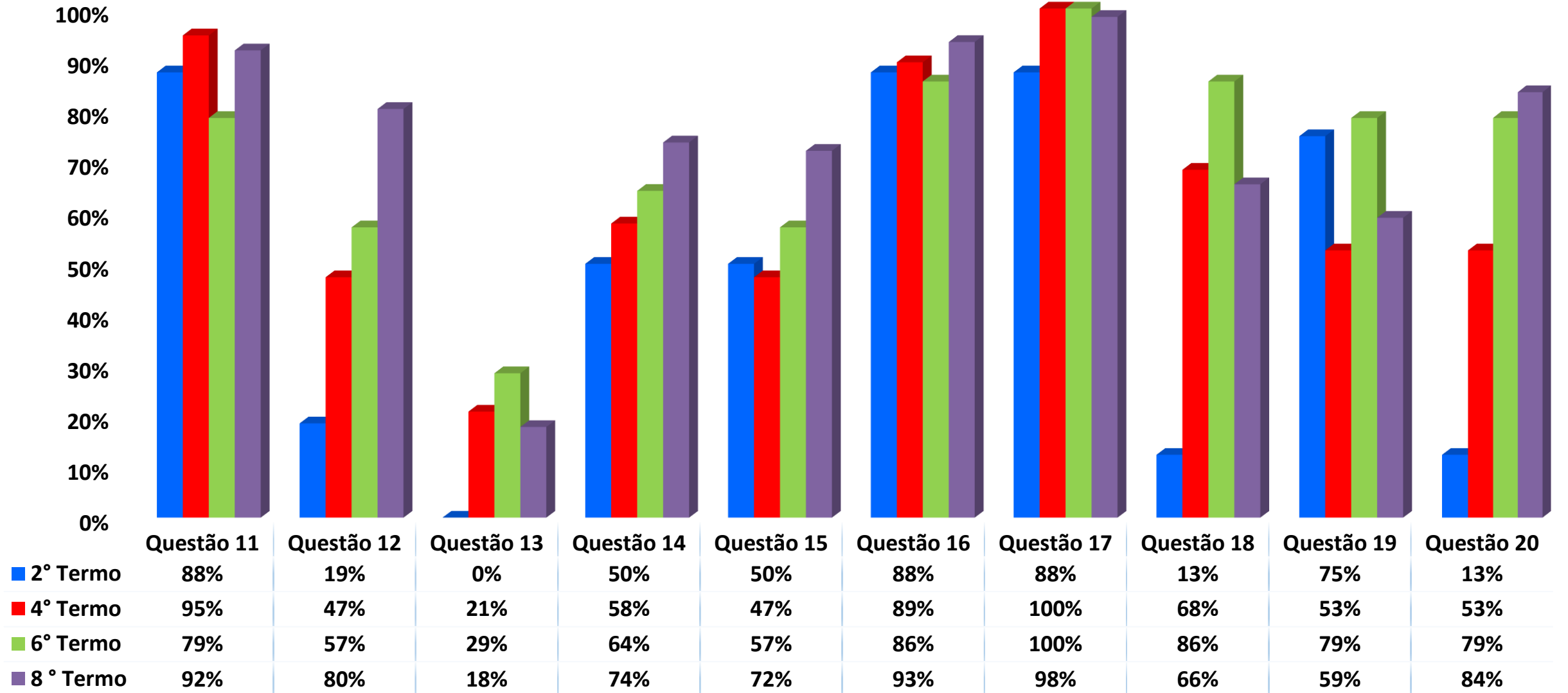
8º Termo

# Prova Progresso 2014– Acertos por Pergunta



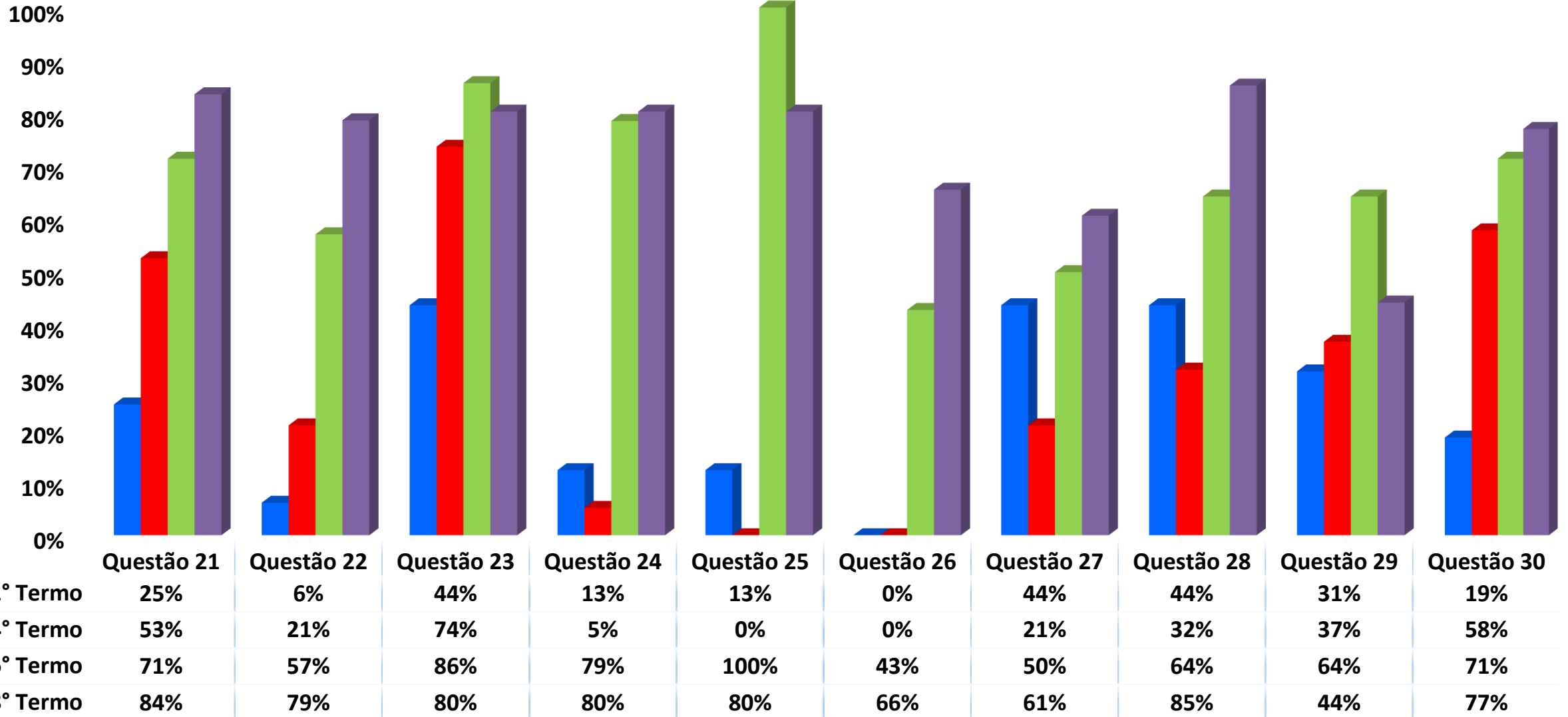
Enfermagem

# Prova Progresso 2014– Acertos por Pergunta



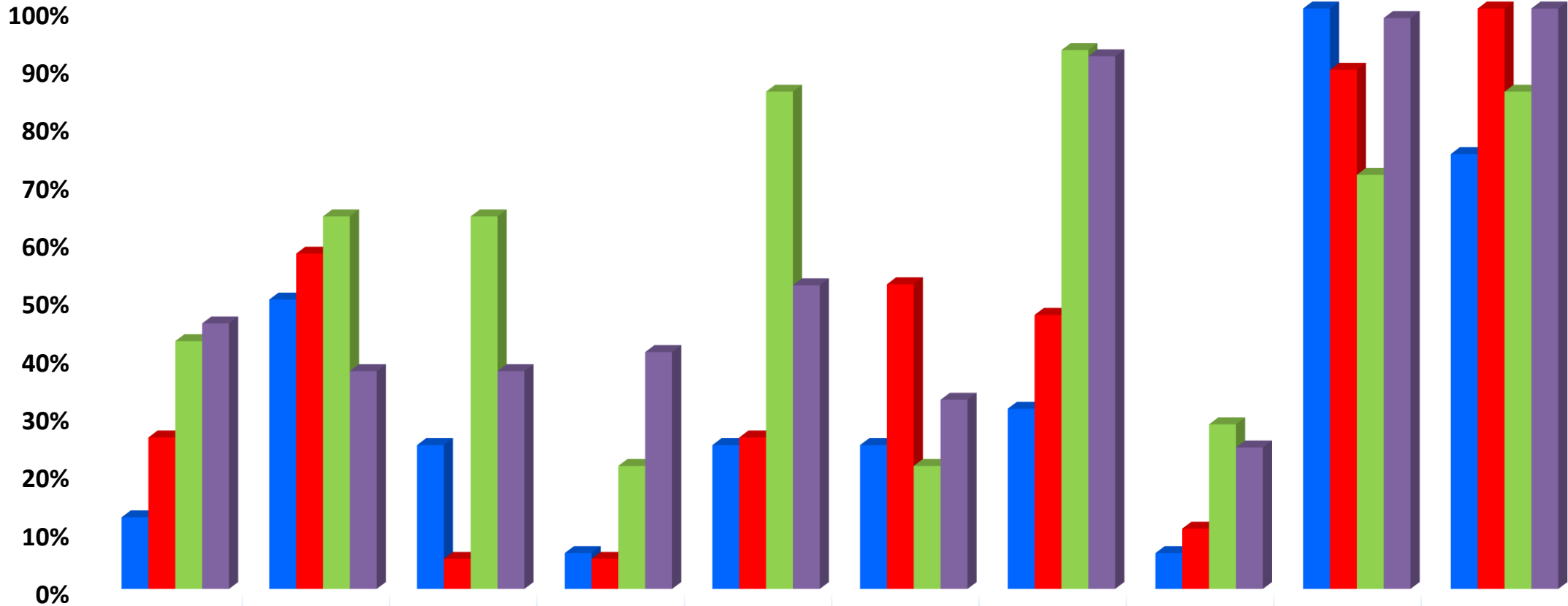
Enfermagem

# Prova Progresso 2014– Acertos por Pergunta



Enfermagem

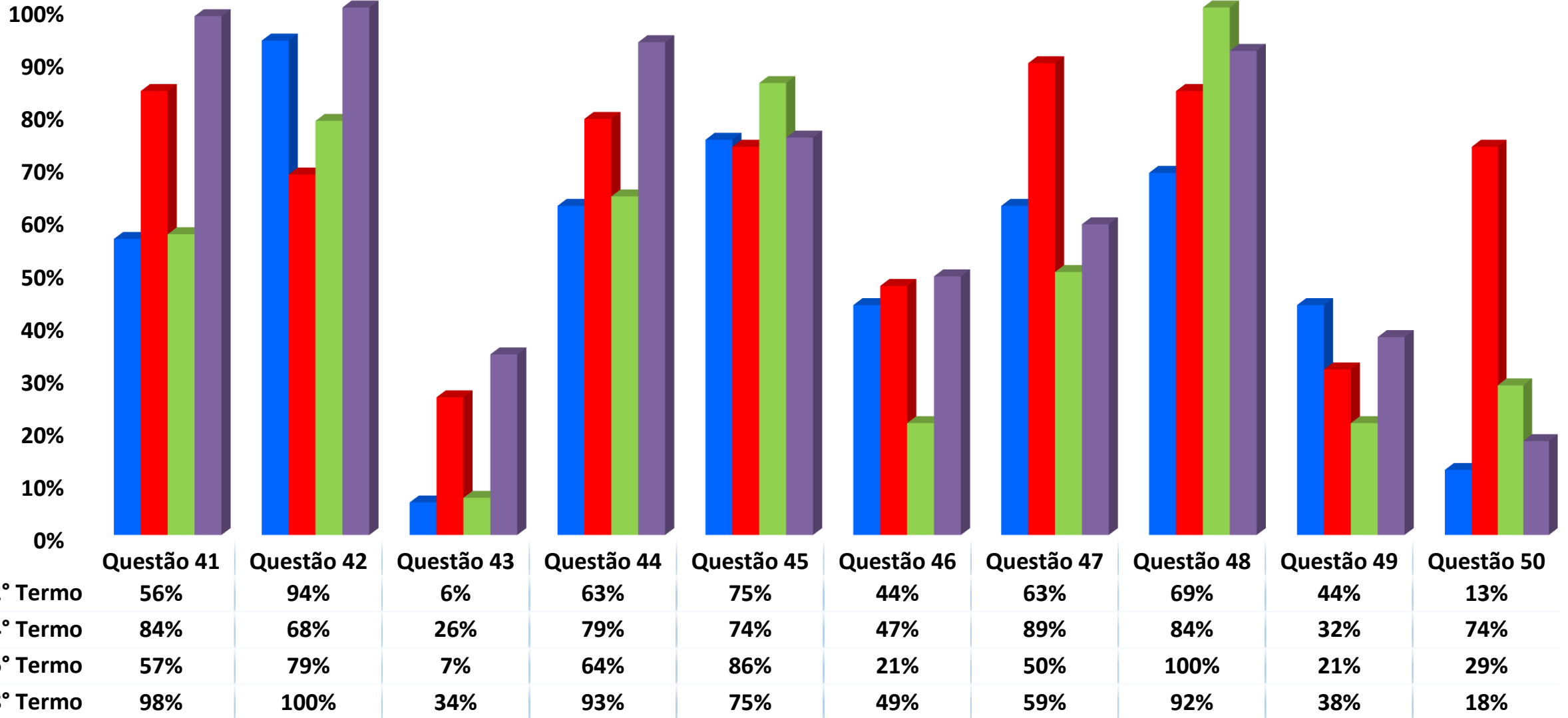
# Prova Progresso 2014– Acertos por Pergunta



	Questão 31	Questão 32	Questão 33	Questão 34	Questão 35	Questão 36	Questão 37	Questão 38	Questão 39	Questão 40
■ 2º Termo	13%	50%	25%	6%	25%	25%	31%	6%	100%	75%
■ 4º Termo	26%	58%	5%	5%	26%	53%	47%	11%	89%	100%
■ 6º Termo	43%	64%	64%	21%	86%	21%	93%	29%	71%	86%
■ 8º Termo	46%	38%	38%	41%	52%	33%	92%	25%	98%	100%

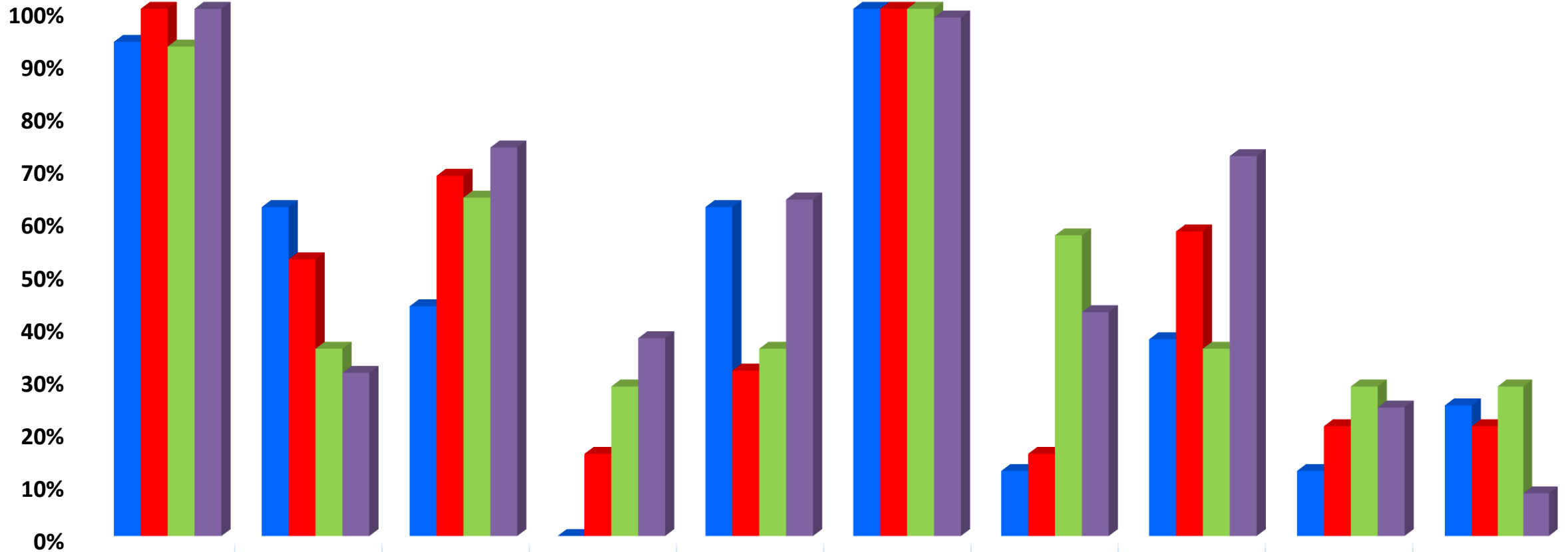
Enfermagem

# Prova Progresso 2014– Acertos por Pergunta



Enfermagem

# Prova Progresso 2014– Acertos por Pergunta



	Questão 51	Questão 52	Questão 53	Questão 54	Questão 55	Questão 56	Questão 57	Questão 58	Questão 59	Questão 60
■ 2º Termo	94%	63%	44%	0%	63%	100%	13%	38%	13%	25%
■ 4º Termo	100%	53%	68%	16%	32%	100%	16%	58%	21%	21%
■ 6º Termo	93%	36%	64%	29%	36%	100%	57%	36%	29%	29%
■ 8º Termo	100%	31%	74%	38%	64%	98%	43%	72%	25%	8%

**Enfermagem**